



Omikron Data Quality Server

The basis for lasting data quality for your entire company. SOA (Service Oriented Architecture) is the key.

The Data Quality Server

"Omikron Data Quality Server" is the universal interface to improve data quality corporate-wide. The Service Oriented Architecture (SOA) is the key to ensure data quality for every data transfer process, all the way from normal address corrections up to a corporate-wide duplicate avoidance strategy.

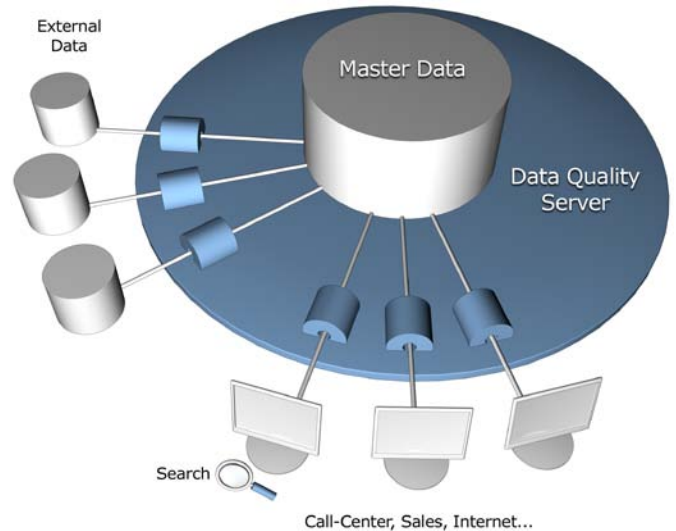
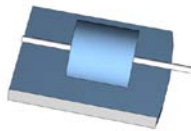
SOA guards your processes

"Omikron Data Quality Server" puts you in a position to guard each data transfer process in your system. For instance, you can verify the postal format of your address data on a weekly basis, and thereafter identify and remove duplicate records. You can also check the addresses of new customers who have registered on the contact page of your online shop, before the records are added to your system: address checks prevent any "Daffy Ducks" from getting into your data.

The centralized interface is available as a continuous service, accessible from any location. This provides a permanent solution to maintain a high quality level for all of your data.

Modules for Data Quality Server

- **Postal address conformance checks**
Uses the FACT® similarity process in conjunction with data from the postal service to find problems (for example, the wrong postal code for a given street) and corrects them if desired.
- **Duplicate testing and searches:**
Uses the FACT® similarity process to find duplicated data records within any number of data sources, and lets you decide what to do with them. This can also be used to avoid duplications right when the data is entered!
- **Fast and error-tolerant search**
- **Restructuring unformatted data**
- Upper-/lowercase conversion
Intelligently converts data in ALL CAPS or all lowercase into the proper Upper- & lowercase form.
- **Salutation generation**
The correct (masculine or feminine) address salutations can be generated, using the given (first) name, or other combined field information.
- **Correction of parts lists**
"Light bulb 60 Watt, E27" is the same as "Light bulb E27 socket, 60 W", but different from "Light bulb Socket E27, 40 W". Omikron's special similarity processing recognizes the relevant differences.
- **Comparison of sanction lists**



Caption: The basis for integrated data quality is provided by the Data Quality Server (blue), universally accessible as a service via SOA.

What technologies do we use?

"Omikron Data Quality Server" uses exclusively internationally standardized XML web service technologies for communication: this guarantees a problem-free integration in practically every server environment.

The server makes use of Omikron's long-standing and continually improved technologies, including FACT® and PostFit. These are now provided as a webservice for the first time.

"Our project group for address management tested the duplicate comparison algorithms from several leading suppliers. Omikron's system turned out to be by far the best."

Klaus Hollmann, IT Director, Schäfer Shop GmbH

You can rely on us...

Over 30 CRM providers, 1100 customers, and 14000 users trust in Omikron's experience and reliability, and we gain more each day. In cooperation with our partners, we offer solutions for many popular CRM and ERP systems, including SAP® and Microsoft CRM®.

**Take advantage of the potential of better data!
Call now:**

**Info-Hotline: +49-7231-12597-0
or: info@omikron.net**